

CURRENT NEWS



What's Happening



FEB. 6

Member appreciation event in Hettinger



APRIL 25

North Dakota Career Tour applications due



JUNE 5

Annual meeting in Bowman

We are seeking youth to apply for the North Dakota Career Tour. Applications are due April 25.

In case you missed it...

Youth invited to apply for the North Dakota Career Tour

If you've ever been curious about what powers your world, this is your chance to explore. From coal mines and power plants to wind turbines and electric cooperatives, you'll get hands-on experiences and hear directly from the experts who drive North Dakota's energy sector. Learn more and apply on our website, slopeelectric.coop/north-dakota-career-tour

Join us at our member appreciation events

We are excited to announce that we are hosting a few member appreciation events this year. These events will provide an excellent platform to meet with our CEO's, board of directors and staff to ask questions and visit.

Event Details:

5-7 p.m. Feb. 6 in Hettinger at the Hettinger City Armory

Read these stories and more in this month's issue of *North Dakota Living*.

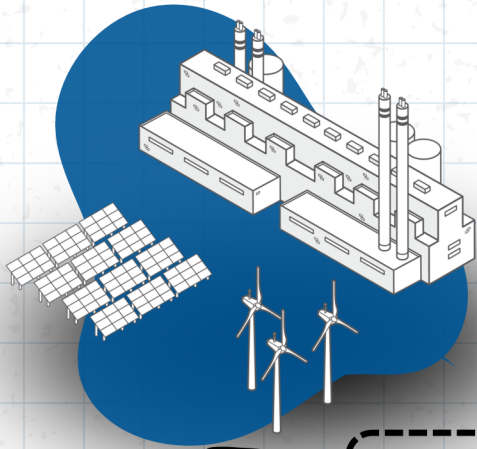


Your Touchstone Energy® Cooperative 

CRITICAL CONNECTIONS



Here's how electricity gets to you ...



1

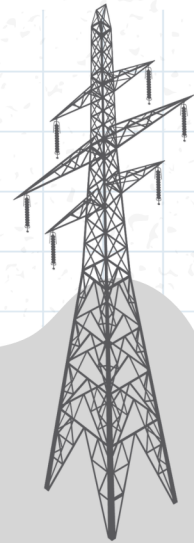
GENERATION

Power plants generate electricity from a variety of energy sources.

2

TRANSMISSION

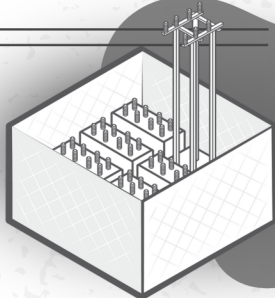
High-voltage electricity travels from power plants over long distances through transmission lines.



3

SUBSTATION

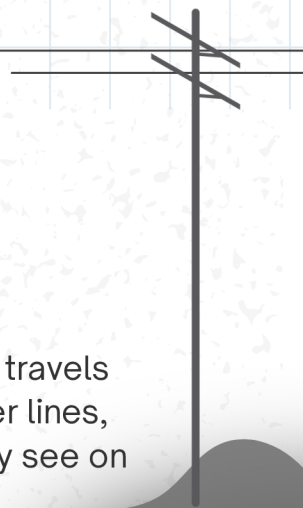
Electricity travels through a substation where the voltage is lowered.



4

DISTRIBUTION

Lower-voltage electricity travels through distribution power lines, like the ones you typically see on the side of the road.



5

TRANSFORMER

A transformer located on the ground or a utility pole reduces the electricity voltage a final time.



6

LAST STOP

Electricity arrives at your home, school or business and is ready for use.

